



Flight Plan & Site Survey

Created using **RPAS Wilco**[®]

Operation Name:	Sun City Estevan Market Square
Pilot Name:	
Pilot Certificate:	
Flight Start:	March 5, 2024 9:52 AM
Flight End:	March 5, 2024 11:52 AM
Flight Area (Latitude):	49° 8' 46.00" N (49.146)
Flight Area (Longitude):	102° 58' 36.00" W (-102.977)
Altitude - Radius:	Alt: 699 ft - Rad: 926.0 m (0.5 nm)
Airspace:	CERT
FIR - Contact:	CZWG - 204-983-8338

Please ensure you received all required authorizations prior to flight.

Disclaimer

This Site Survey was created using RPAS Wilco by AIM Robotics. The flight plan contained is intended only for RPAS flights on the date/time and location specified. The user accepts all responsibility for the accuracy and completeness of the information contained.

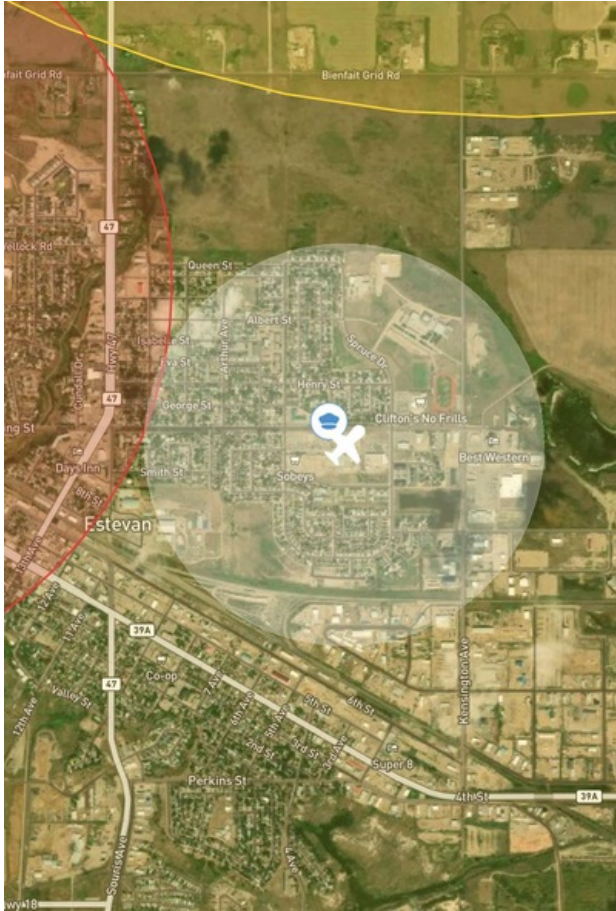
For the complete Terms & Conditions, see

<https://rpswilco.com/#/tnc>



Included

- Site Survey
- Obstacles (if available)
- Nearby Aerodromes
- Canadian Aviation Regulations
- GFA
- Aerodrome Supplements
 - METAR & TAF (if available)
 - NOTAMS
 - CFS

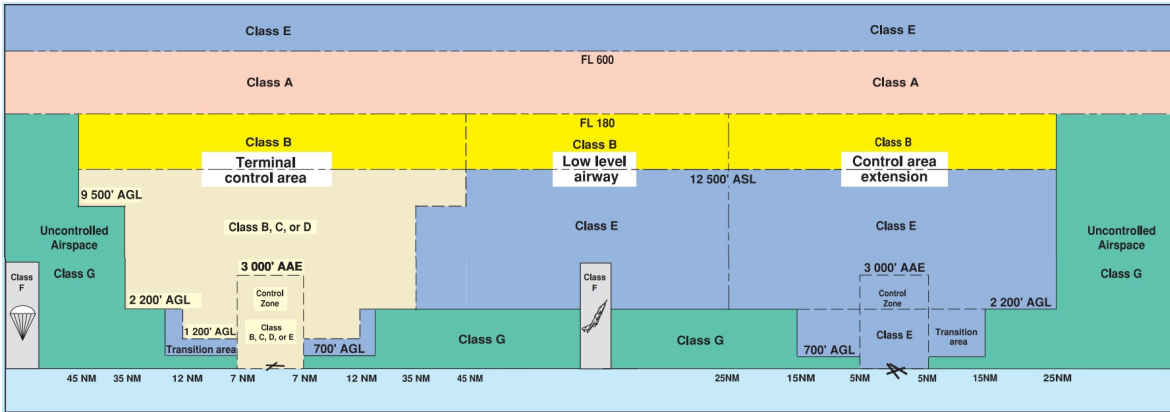
Flight Map



MAP Details

	Latitude	Longitude
 MODEL	49° 8' 46.00" N (49.146)	102° 58' 36.00" W (-102.977)
 Pilot	49° 8' 49.60" N (49.1471)	102° 58' 39.60" W (-102.9777)

Airspace Classification



Overlying Airspaces

Class	Name	Floor	Ceiling
-------	------	-------	---------

Nearest Aerodromes & Distance from Operation

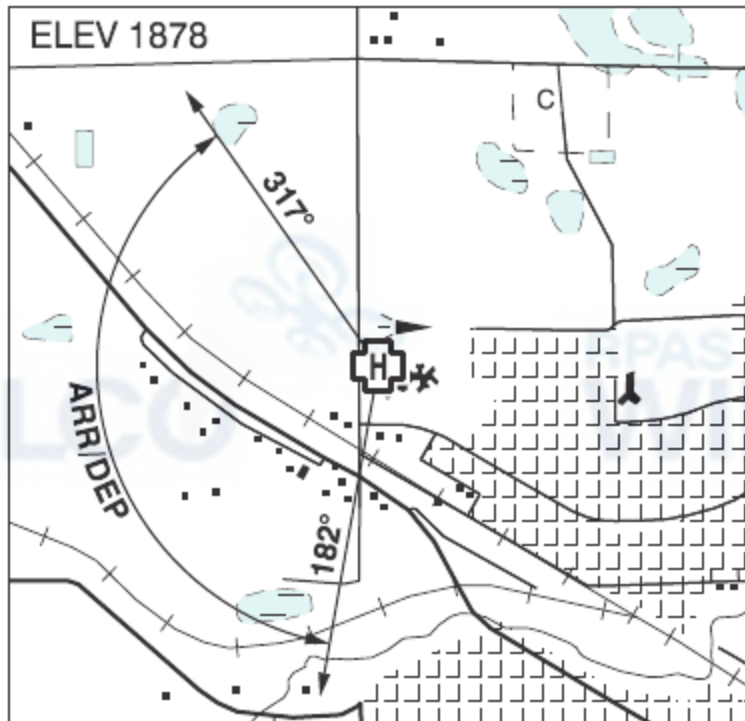
ESTEVAN (ST. JOSEPHS HOSP) (CSJ3 - HELIPORT - Cert)	Lat: 49.153	Long: -103.013	2.751 KM	1.49 NM
ESTEVAN REGIONAL (CYEN - AERODROME - Reg)	Lat: 49.21	Long: -102.966	7.146 KM	3.86 NM
ESTEVAN (BLUE SKY) (CBS2 - AERODROME - Reg)	Lat: 49.294	Long: -103.021	16.757 KM	9.05 NM

SASKATCHEWAN

AERODROME/FACILITY DIRECTORY

ESTEVAN (ST. JOSEPH'S HOSP) SK (Heli)

CSJ3



REF	N49 09 11 W103 00 47 Adj NW 8°E (2014) UTC-6 Elev 1878' A5006
OPR	Sun Country Health Region 306-637-2400 Cert PPR
PF	A-1 B-4 C-2,3,5,6
FLT PLN	
FIC	Edmonton 866-WXBRIEF (Toll free within Canada) or 866-541-4102 (Toll free within Canada & USA)
HELI DATA	FATO 86' dia GRASS/CONC TLOF 39' dia CONC Safety Area 115' dia Max heli overall length 57.4'
RCR	Opr
LIGHTING	RW(LO)
COMM	
ATF	UNICOM ltd hrs O/T tfc 123.0 5NM 5000 ASL centred on Estevan A/D 3.8NM NE
PRO	Arr/dep 182° to 317° fr heli, slope 16% (H2), day/night (CAR 602.96).
CAUTION	Marked and lgtd P-Line 400' NW heli. Lgtd vents on hosp roof. Marked lamp posts and trees S heli.

SASKATCHEWAN

AERODROME/FACILITY DIRECTORY

ESTEVAN REGIONAL SK

CYEN

REF	N49 12 37 W102 57 57 3N 8°E (2013) UTC-6 Elev 1904' A5006 LO2 HI4 CAP	
OPR	City 306-634-8668 Reg	
PF	B-1 C-2,3,4,5,6	
CUST	AOE/CAN	
FLT PLN	FIC Edmonton 866-WXBRIEF (Toll free within Canada) or 866-541-4102 (Toll free within Canada & USA) WX METAR AUTO H24 (see COMM). TAF 12-24Z, issue times: 12, 18Z. WxCam	
SERVICES	Call out chg may be levied for one or more svcs. 306-634-8668/421-9459	
FUEL	100LL, JA-1, SP 14-23Z Mon-Fri, 19-23Z Sat & Sun	
OIL	All	
S	1,2,4,5,6	
RWY DATA	Rwy 08(082°)/26(262°) 5003x100 asphalt Rwy 15(152°)/33(332°) 3001x75 asphalt	
RCR	Opr 306-421-9459 14-22Z Mon-Fri exc hols O/T 2 hrs PN Call out chg. CRFI.	
LIGHTING	08-AS(TE ME) P1, 26-AO(TE ME) P1, 15-(TE ME), 33-(TE ME) ARCAL-123.0 type K	
COMM		
ATF	UNICOM ltd hrs O/T tfc 123.0 5NM 5000 ASL	
AWOS	127.8	
CAUTION	CYA 317(P) within 2NM radius of A/D, extv parajump activity in area to 11,500 ASL Active by NOTAM only. Mar 30-Nov 30.	

SASKATCHEWAN

AERODROME/FACILITY DIRECTORY

ESTEVAN (BLUE SKY) SK

CBS2

REF	N49 17 39 W103 01 14 6.5N 8°E (2014) UTC-6 Elev 1955' A5006	
OPR	Blue Sky Air 306-634-9333 Fax 306-634-9390 Reg PPR	
FLT PLN	FIC Edmonton 866-WXBRIEF (Toll free within Canada) or 866-541-4102 (Toll free within Canada & USA)	
SERVICES	S 2, 5	
RWY DATA	Rwy 12(122°)/30(302°) 3057x70 GRASS Rwy 02(025°)/20(205°) 1490x60 GRASS	
RCR	Opr Ltd win maint.	
COMM	ATF UNICOM ltd hrs O/T 123.0 5NM 5000 ASL	